

YOUNG *Originals*



P. O. BOX 28, 89 PERCH LAKE
SOMERSET CENTER, MI. 49282
PHONE: 517-688-4860

GENERAL INFORMATION

We have been designing and sewing custom competitive uniforms since 1977. Our designs have grown up over the years, as have the needs of today's athlete. We take pride in our work and prefer to construct your uniform or warmup directly from your measurements in order to ensure the fit you desire and need. All this at an affordable price. Your choice of color or color combinations.

We have been team suppliers of Pan American, World, International and Olympic Teams and specialize in custom made clothing for bicycling, bobsledding, cross country and downhill skiing, luge, and speed ice and roller skating.

Our uniforms and warmups are available in just about any color and combination you desire. Fabric samples will be sent to you on request. If you want to design your own uniform or warmup, sketch your design and we will send you cost information...or we'll specially design one for you. You can now FAX us your design or order for the fastest possible service.

Colors currently available in **Youngskin** include black, white, navy, deep dark navy, royal blue, powder blue, greenish blue, medium and lighter turquoise, red, rose, hot pink, burgandy, light grey, purple, mint green, light bright hot green, kelly green, medium green, dark green, yellow, orange, rust, brown, and lilac.

Colors available in **Doubleknit Nylon** are black, white, navy, royal blue, powder blue, sky blue, gold, red, kelly green, forest green, purple, light and pewter grey, orange, cardinal and burgandy.

Colors in **Gamex** include yellow, black, navy, royal blue, light grey, reflective grey and medium mint green.

Sealskin colors are royal, red, light grey and white. Note: When these colors are gone, all of these types of uniforms will be available in **Darlex**.

Darlex colors: Electric pink, electric turquoise, very hot green. Note: This fabric will be available in an additional 11 colors shortly.

Supplex Colors are navy, white, hot pink, red, medium blue, light yellow and additional colors from time to time.

Ultrex Colors are medium blue, red, bright yellow, navy and light grey. New colors from time to time.

DELIVERY For individual orders is within 10 to 14 days and often in just a few days. For large team orders allow three to four weeks for receipt of your order.

TEAM ORDERS: There is a discount on team orders of ten or more of an item. Percentage of the discount depends on quantity ordered and the design involved.

LETTERING AND SILK SCREENING

We do our own silkscreening to insure proper application. Cost of each screen is \$15.00 using your camera ready art work. Cost per print is \$1.35.

Individual letters are recommended for smaller orders.

1 inch	\$.10 ea.
2 inch	.25 ea.
3" & script	.30 ea.

Quotes for quantities of racing numbers on request.

For your convenience we accept Visa and Master Card

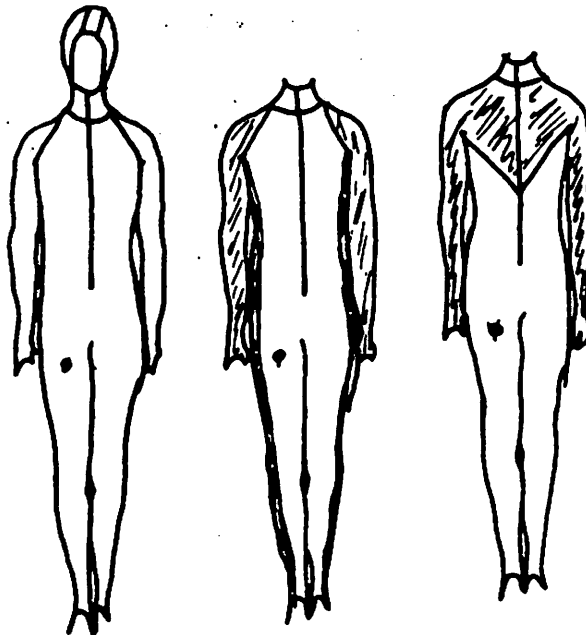
FAX us at 517-688-3161 for fast estimates on your design needs

ONE PIECE UNIFORMS

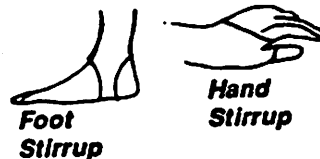
Speedskating, Cross Country Skiing, Luge, Bobsled, Downhill Skiing, Winter Cycling, and Biathlon

Youngskin, four way stretch

Our one piece uniforms have become very popular for all winter sports. When ordering, be sure to note your sport because there are variations added to the uniform to best meet your needs. If you would like to try a new uniform design let us know about your ideas and they will be built into your new suit. Speed skaters use either the cuffed neck or the hooded version. Luge people prefer a rear zipper, while bobsledders and skeleton people usually prefer a front zipper. Downhill skiers sometimes prefer larger stirrups for use outside of their boots, while others prefer to wear theirs inside of the boot. These uniforms are available in your design or one of ours in the color or color combination of your choice. Your options are many and we currently stock 25 colors. See the general information sheet.



Youngskin, long arms and legs, foot and hand stirrups. No extra charge for contrasting arms, neck, hood or for a different color front or back of uniform \$68.50



A few of the many options are:

Side stripes	5.00
Arm stripes	5.00
V cut, front and/or back	
Arm or leg swirls	5.00
Double front layer	15.00

We specialize in custom designs. Send in your design for your costs or let us design a uniform especially for you!

Sealskin or Darlex One Piece Uniforms

This is a rubberized coated stretch nylon fabric. It is very aerodynamic, excellent for luge, bobsledding, cycling, speedskating, windsurfing, swimming. Good stretch. This fabric does not breathe but is good for special event uses. Can also be combined with Youngskin lycra at various locations for venting. Use your imagination and we will build your suit to your specifications. Currently limited color selection. Darlex will eventually be available in 14 colors or combinations.



All Sealskin or Darlex	\$165.00
Sealskin top, Youngskin bottom	120.00
Luge Booties	17.50

ROLLERSKATING ONE PIECE

Specially designed for speed and performance. No extra charge for contrasting top/bottom, arms or neck. Youngskin nylon lycra \$50.00
Special designs are extra.

For faster service FAX in your design to: 517-688-3161



YOUNG
Originals



LONG TIGHTS, MULTI SPORT

Elastic waist, stirrup bottoms. A versatile, custom made pair of tights, excellent for any sports activity.

- Youngskin **\$26.00**
- Doubleknit Nylon **24.00**
- Side stripes or leg swirls **5.00**
- Special designs slightly more



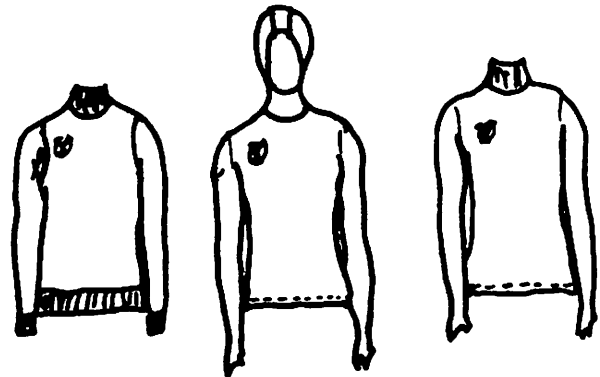
LONG BIB TIGHTS

Use as bibs or a light weight warmup. One of our most popular items for all sports. Youngskin fabric only. Front zipper, foot stirrups

- \$35.00**
- Leg swirls or side stripes **5.00**
- Special designs slightly more

TIGHTS, BELOW THE KNEE

Elastic waist. Excellent for many activities. **23.00**
Designs slightly more.



ROLLERSKATING SHORTS

Youngskin, elastic waist. **\$21.00**
Special designs are extra



NUMBER BIBS

Youngskin, in color of your choice **\$12.50**
Special designs extra

JERSIES-MULTI SPORT, Long Sleeves

Many to choose from in either Youngskin or doubleknit nylon. Long sleeve, cuffed turtle type or crew neck. Cuffing on wrist and bottom or with a finished turned under bottom. **No extra charge for contrasting cuffing or arms.**

- Youngskin lycra nylon **\$26.00**
- Doubleknit nylon, nylon rib cuffs **24.00**
- Hooded top, thumb stirrups, Youngskin only **28.00**
- Most Special designs or arm stripes **5.00**

YOUNG *Originals*

P.O. BOX 28, 89 PERCH LAKE
SOMERSET CENTER, MI. 49282
PHONE: 517-688-4860

Ultrax Shell Suits This is the second generation fabric with all the qualities of Goretex. Truly wind resistant and water proof.

Jacket, unlined, comes with concealed drawstring hood, full front zipper and with two zippered pockets. Wrist and jacket bottom are elastic. **\$42.50**

Pants, unlined, come with either 12" side zippers, or with elastic bottoms, a rear zip pocket and and waist elastic. **\$40.00**

SHELL SUITS

Supplex Shell Suit

Supplex Jacket, 2 pocket zippers, zipper to chest, concealed hood, elastic wrist and bottom, styles 1, 2, 3 or 4 **\$40.00**

Also see Supplex unlined jacket with cuffed neck, bottom and arms, full length zipper on opposite page.

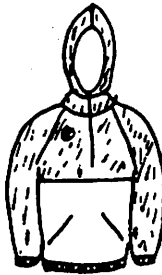
Pants: rear pocket zipper, elastic waist, Bottom of pants either elastic or 12" side zipper **\$40.00**

Gamex Shell Suit

Only 10 ounces per suit. Folds compactly for easy carrying. Gamex breathes, is wind resistant, rustle free and very easy to care for. Top comes with two zippered slash pockets and a zipper to mid chest. Attached concealed drawstring hood. Elastic wrist and bottom.

Gamex Jacket, 2 pocket zippers, zipper to chest, concealed hood, elastic wrist and bottom. Styles 1, 2, 3 or 4, zippers to mid chest. Full Raglan **\$40.00**

Gamex Pants: Zippered rear pocket, elastic waist and bottom, or with 12" side zippers. **\$40.00**



VIEW 1



VIEW 2



VIEW 3



VIEW 4



Cycling

JERSIES, Bicycling and Rollerskating

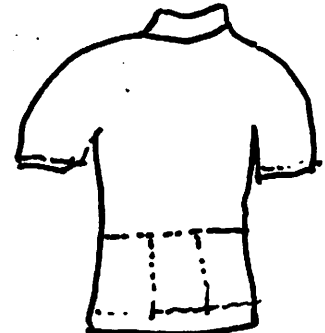
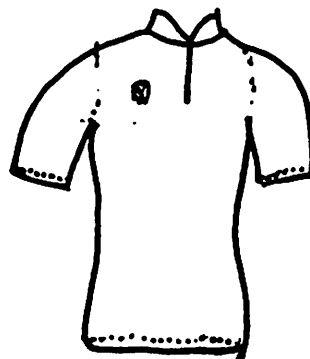
Solid color, front zipper, Youngskin **\$26.00**

Rear pockets, add **\$3.00**

Long sleeves cuffed or thumb stirrups add **4.00**

Special designs are extra depending on complexity of the design. Your options are never ending. Send in your design for your cost.

For fast design estimates FAX us
your design 517-688-3161



There is no limit to your design possibilities. You name it, we do it! Please see the information sheet for colors, team discounts, silk screening, etc.

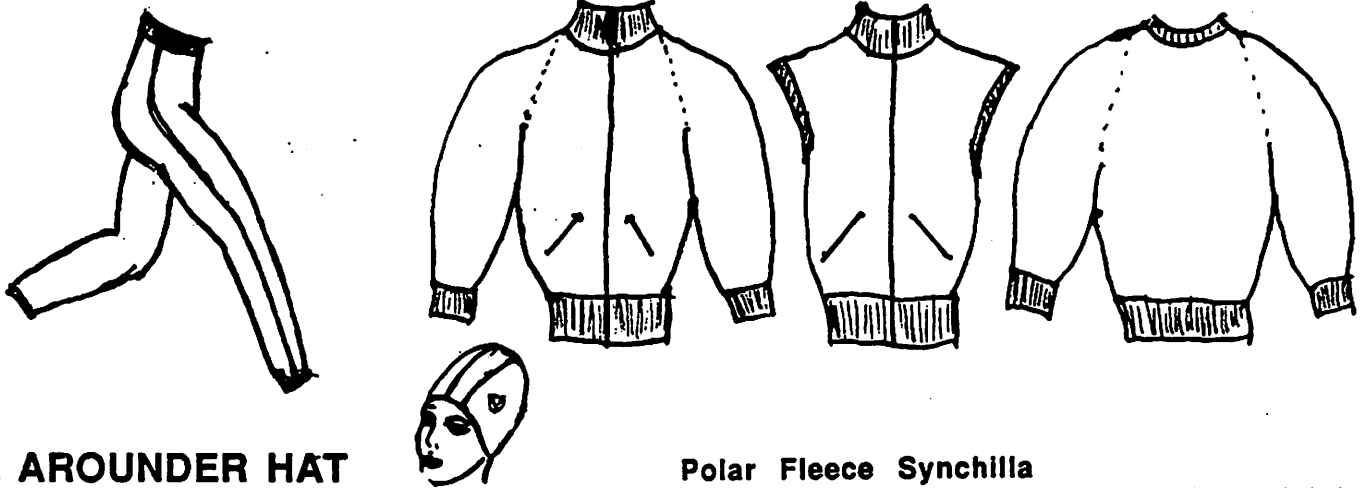
WARMUP PANTS

Doubleknit nylon

Doubleknit nylon outer, terry lined. One of our most popular items. Extremely comfortable. They move with you and allow for full freedom. Many people wear these year-round. Elastic waist. **SPECIFY WHITE OR NAVY ZIPPERS WHEN ORDERING.** Available in 14 doubleknit colors. See the General Informations sheet.

Full length separating zippers \$47.50
 12" side zipper 44.00
 Doubleknit unlined full zippers 37.50

Youngskin outer, lined, full zipper 52.00
 Youngskin outer, lined, 12" zipper 48.00



ALL AROUNDER HAT

Made in either doubleknit nylon or lycra outer, terry cloth lined to match your warmup or one piece \$7.50

Supplex lined

Supplex is a light weight shell nylon fabric that is totally wind proof, water repellent, breathes and has the feel of cotton. See general information sheet for color selection. Knit collar, arm and bottom cuffs, full length separating zipper. **Specify navy or white zippers.**

Supplex jacket fleece lined \$60.00
 Supplex jacket polarfleece lined 69.60

Supplex unlined shell jacket

High knit neck collar, arm and bottom cuffs, full front zipper, zippered pockets full raglan cut. **Specify navy or white zippers.** \$42.00

Polar Fleece Synchilla

Cuddly and furry soft! Navy, red, black, light and dark grey. Double faced for a soft luxurious feeling on both sides. Rapid drying fleece absorbs no more than one percent of its weight in water. Feels comparable to wool but with very little weight. Very fast drying. **Specify navy or white zippers.**

Jacket, full front zipper, 2 zippered pockets, arm, neck and bottom ribbing. Full raglan cut \$47.50
 Vest, high cuffed neck, bottom 35.00
 slip over shirt, ribbed cuffing 35.00

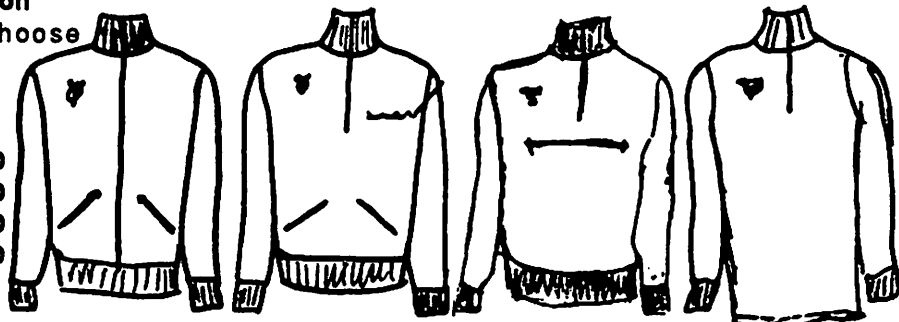
YOUNG WARMUP JACKETS

Doubleknit Nylon

Double Knit Nylon outer, stretch terry cloth lined. High cuffed neck, cuffed wrists and bottom, zippered pockets. Style D is for winter riding and has three rear pockets. **NO EXTRA CHARGE FOR CONTRASTING COLLARS AND CUFFS OR FOR CONTRASTING ARMS.** Special designs on request. **Specify White or Navy zippers:** Choose in any of 14 colors or combinations. See General Information sheet.

Doubleknit Nylon Outer, terry lined \$52.50
 Doubleknit nylon, unlined 42.50
 Arm stripes 5.00
 Most special cuts add 5.00
 Complicated designs slightly higher

Youngskin Outer, Terry Lined 60.00



View A

View B

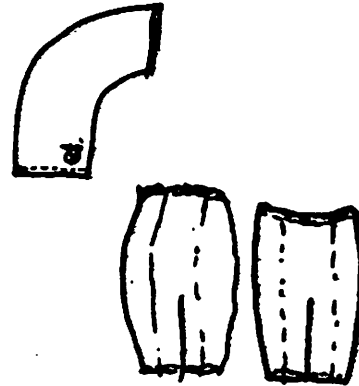
View C

View D

CYCLING SHORTS

Six panel construction. Heavier weight Youngskin fabric for very comfortable and durable wear. Comes in your choice of color or color combinations. Elastic waist and a high quality English chamois for the traditionally minded, or with a durable synthetic chamois which many now prefer. Contrasting side panels can be substituted at no additional cost.

Cycling Shorts,	
Leather Chamols	\$34.00
Synthetic Chamols	31.00
Side stripes and designs	\$5.00



CYCLING ONE PIECE

Front zipper, solid color top, short sleeves, black, or any color tights. No extra charge for contrasting arms, collar or cuffs.

Leather Chamols	\$62.50
Synthetic Chamols	59.50
Special designs slightly more. Send in your design for your cost.	

BIB SHORTS

Six panel construction, zippered front, choose any color top or bottom.

Leather Chamols	\$40.00
Synthetic Chamols	37.00
Side stripes or designs	5.00



ARM AND LEG WARMERS

Youngskin, black or your choice of colors

Arm warmers	\$12.50
Leg warmers	15.00

HELMET COVERS

Coordinate your helmet cover to your uniform.
No extra charge for contrast center panel **\$7.50**

For fast design estimates FAX us
your design **517-688-3161**

YOUNG
Originals

P.O. BOX 28, 89 PERCH LAKE
SOMERSET CENTER, MI. 49282
PHONE: 517-688-4860

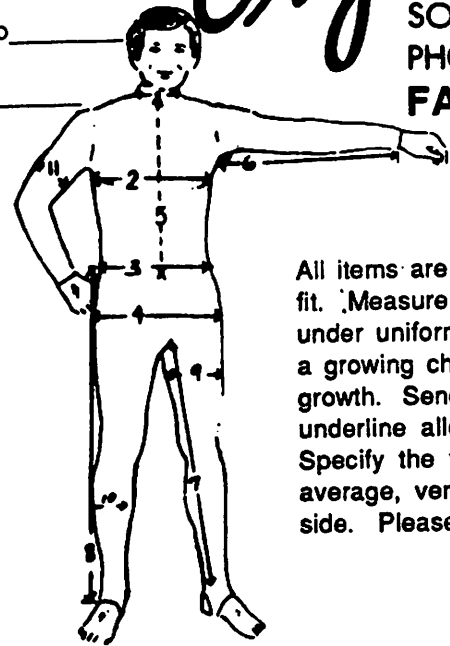


3 WAYS TO PAY — C.O.D., CHECK, CREDIT CARD

YOUNG Originals

P. O. BOX 28, 89 PERCH LAKE
SOMERSET CENTER, MI. 49282
PHONE: 517-688-4860
FAX: 517-688-3161

Date _____ Phone _____
Name _____
Address _____
City _____ State _____ Zip _____
Age _____ Height _____ Weight _____ Sport _____



Measurements
Neck _____ Chest _____
Waist _____ Hips _____
Back neckbone to waist _____
Underarm to wristbone _____
Inner crotch to anklebone _____
Outer waist to anklebone _____
Thigh _____ Calf _____
Arm (bicep) _____

All items are custom made to insure proper fit. Measure over any clothing to be worn under uniform or warmup. If ordering for a growing child do not allow for extra growth. Send in actual measurements and underline allow for extra growing room. Specify the fit you would like... average, very form fitting, or on the loose side. Please measure carefully.

Item	Complete Description...include color stripes, lettering, design	Price	Total

All orders are payable in U.S. Funds.
Canadian and foreign orders are payable in advance. Minimum deposit in U.S. is 50%. Save Cod charges by prepaying or charging your order.

Michigan residents, add 4% sales tax _____
Sub-total _____
Shipping _____
Amt. enclosed _____



Visa Mastercard Expiration Date _____
 Account Number _____ Signature _____

UPS and handling in the U.S.

Alaska: shipped 2nd day UPS air

Canada:

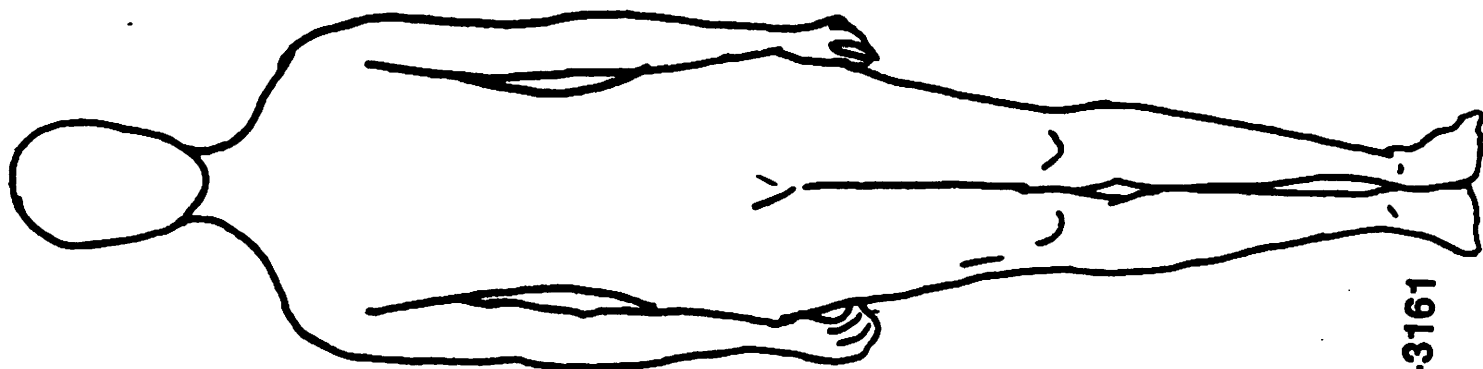
add \$2.50 for 1 or 2 items
 add \$3.50 for 3 or more items
 add \$5.00 for 1 or 2 items
 add \$7.50 for 3 or more items
 add \$4.50 for 1 or 2 items
 add \$8.50 for 3 or more items



TO:

P.O. BOX 28, 89 PERCH LAKE
SOMERSET CENTER, MI. 49282
PHONE: 517-688-4860

YOUNG
Signature



DESIGN

YOUR

OWN

UNIFORM!

FAX: 517-688-3161